



lips

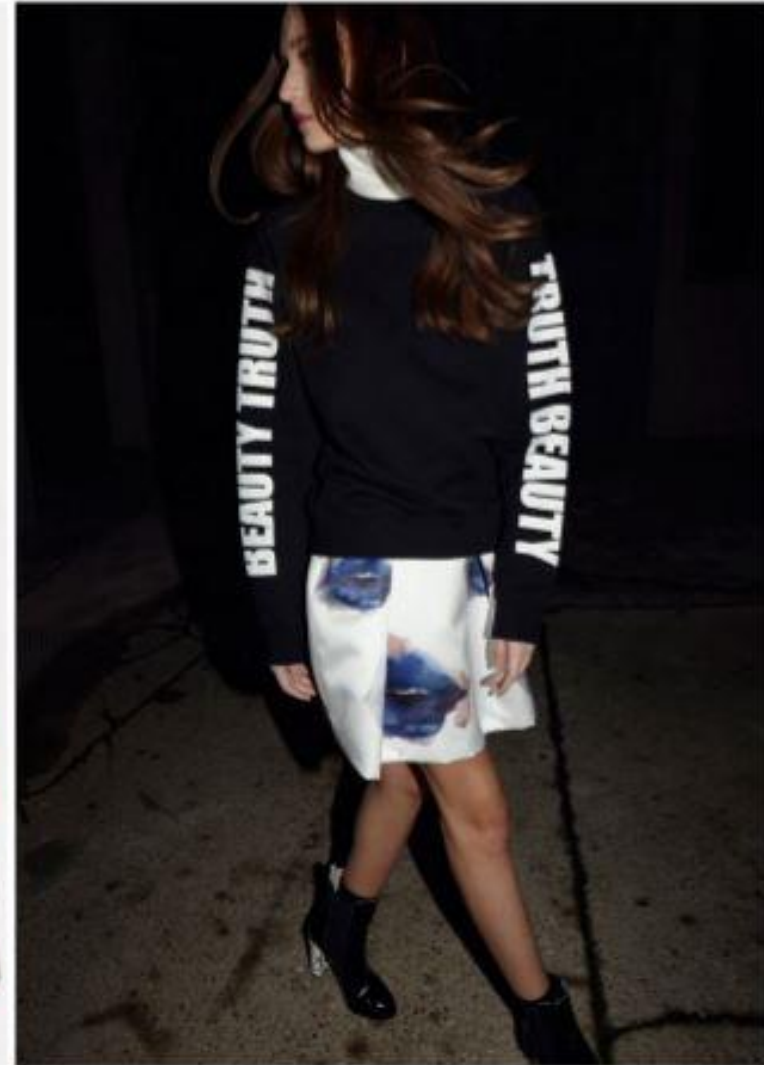
FOCUS

WOMENS & MENS Concept report S/S 2015



ERIN FETHERSTON @ lyst.com; MARC by MARC JACOBS iPhone case @ bloomingdales.com; top: LIZZIE FORTUNATO @ theenglishroom.biz; bottom: MARC by MARC JACOBS @ theenglishroom.biz

Lipstick impressions: Prints and accessories look as though they have just been planted with kisses and the effect can be bold or delicate. Lipstick prints appear softly faded onto sheer blouses in shades of pink and red, these patterns have a random-style repeat - a monochrome version would work for men's shirts. Prints with a deeper colour saturation are printed on top of bold black and white stripes and add a novelty element to accessories.



YOHJI YAMAMOTO A/W 2014 Paris; MSGM @ bitebeauty.com; MSGM Pre-Fall 2014

Blurred effects: Key designers have used the lip motif across clothing that turns into a canvas for artistic interpretations. Wild splashes of violent colour are intersected with lip prints at Yohji Yamamoto. MSGM creates a smudged lip print with edges that bleed with watery colour. The use of satin with a firm handle creates a contrast between the upmarket fabric base and the grungy style of the print.

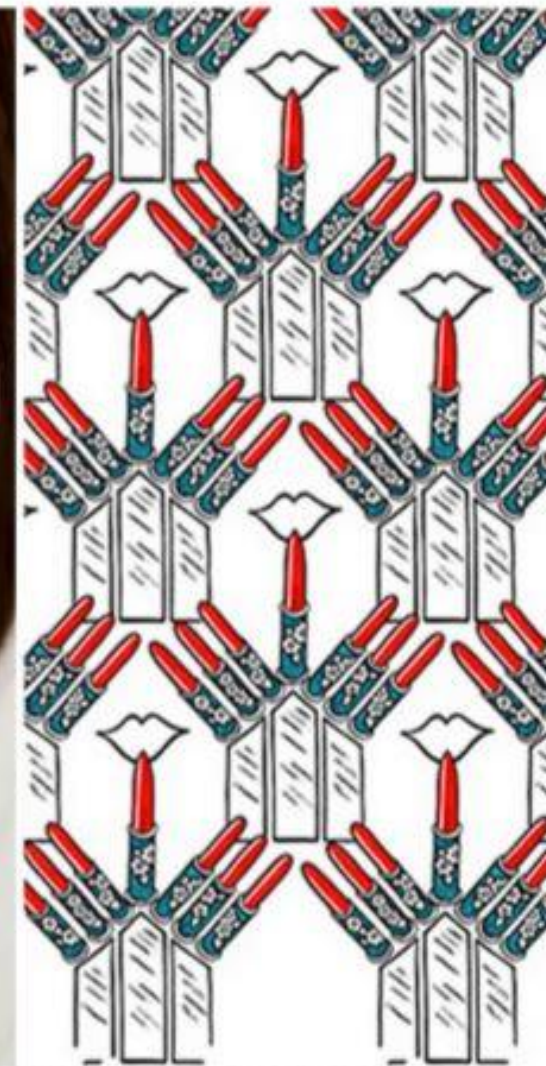


top left: SALVADOR DALI-designed brooch @ jewelsdujour.com; *bottom left:* LULU FROST for J.CREW necklace @ theenglishroom.biz; LULU GUINNESS @ luluguinness.com; *top right:* ENIGMA by GIANNI BULGARI @ jewelsdujour.com; *bottom right:* SOLANGE AZAGURY-PARTRIDGE ring @ solange.co.uk

Luxury details: In monochrome or two-tone combinations with lots of shine, heavy embellishment is the key to this look. Studded spikes, diamonds, crystals and precious stones are used to decorate lip shapes, in styles that mix punk, surrealism and high-end glamour. Lip shapes are closed, parted or filled with rows of pearly 'teeth'.

lipsFOCUS

WOMENS & MENS Concept report S/S 2015



LIPSTICK CASES

FASHION EAST ASHLEY WILLIAMS A/W 2013 London; CHIARA FERRAGNI @ luisaviaroma.com; VANCARO @ vancaro.com; ZANDRA RHODES print (1970) @ fashinonthe70s.wordpress.com

Make-up motifs: Lips are partnered with decorative tubes of Lipstick. Pretty lipstick cases are printed onto sheer fabrics with a 'Celebrate and have a good time' message, retro styles from the '70s arrange lips and lipsticks into geometric repeat patterns. In accessories, slipper-style footwear and single earring designs pair lipstick tubes and lips together. The earring mismatches the lipstick colour to add an offbeat look.

lipsFOCUS

WOMENS & MENS Concept report S/S 2015

PINK LADY



top left: DIANE VON FURSTENBERG clutch @ theenglishroom.biz; bottom left: DIANE VON FURSTENBERG iPhone case @ theenglishroom.biz; GILES S/S 2014 London; DIANE VON FURSTENBERG's NYC PENTHOUSE @ theenglishroom.biz; top right: lip print socks @ emergingthoughts.com; bottom right: KDIA two-finger ring @ thisnext.com

Feminine colour & styling: Shades of pink from bubblegum and sorbet to super-bright, intense colour. The lip motif appears in a variety of shapes; as the metal clasp on a bag, as a Warhol-style print, the delicate embroidery on a dress, a velvet covered sofa, printed knee-high socks and a double ring. The shape is minimal and has a strong impact in pink colours.



top left: DIANE VON FURSTENBERG minaudière @ net-a-porter.com; bottom left: AURÉLIE BIDERMAN necklace @ matchesfashion.com; LULU GUINNESS, London 2014 Trendzine Street Shot; top right: PAULE KA bracelets London 2013 Trendzine Retail Shot; bottom right: KISMET ring @ webelieveinstyle.net

Gilded details: Gold lips feature as the decorative closure on minaudière bags or function as the eyelets on a large shopper. Jewellery is formed into chunky open-mouth shapes and a torque necklace features a realistic impression of lips and teeth.



GILES S/S 2014 London; LULU GUINNESS @ webelieveinstyle.net; top: LULU FROST for J.CREW pin @ theenglishroom.biz; bottom: DIANE VON FURSTENBERG @ net-a-porter.com

Luxury lip motifs: Beaded lips with a gap-tooth design feature on satin dresses for eveningwear, and brooches are covered in crystals and pearl beads. Suitcases with a relief lip pattern and bags with an abstract lip shape add a surreal quality in black and white and can cross over into menswear.



ALICE + OLIVIA @ theenglishroom.biz; IZAK passport cover @ bloomingdales.com; top: FELIX REY umbrella @ shopbop.com; bottom: FORNASETTI tray @ theenglishroom.biz; ALISON LOU necklace @ modaoperandi.com

Lips with faces: Faces feature bright red lips that become the focus of attention. Highly stylised designs feature long curled lashes with closed lids, or single eyes that stand out in bold cartoony shapes. Illustrative sketches of faces with smudgy black eyes and lips run off the sides of wallets and passport covers. The classic Fornasetti designs are instantly recognisable with grainy effects with retouched lips.